

# MOD QW100



Light Efficiency:

34 Lumen/Watt

Light Quality:

CRI: 70.4

Color Temperature:

6852 K

Output: 1025 lm

Peak: 5342 cd

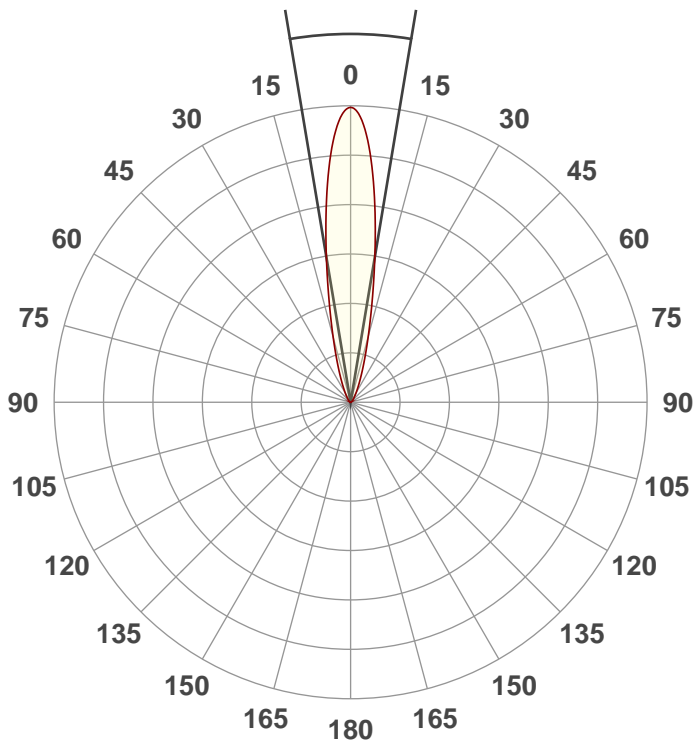
Power: 30.3 W

PF: 0.59



Beam Angle

18.9°



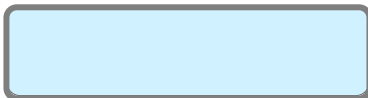
Test:

20Deg White

Date:

11/19/2018

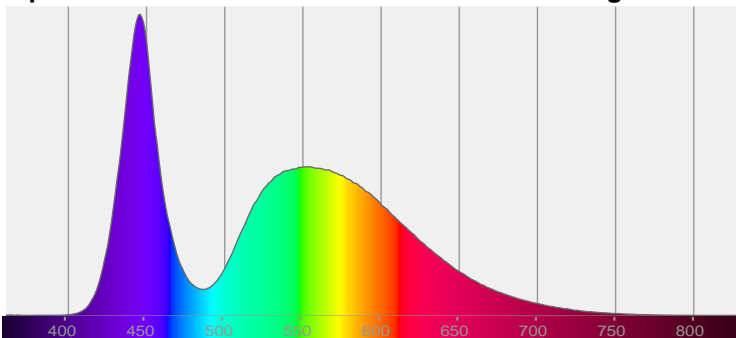
Note:



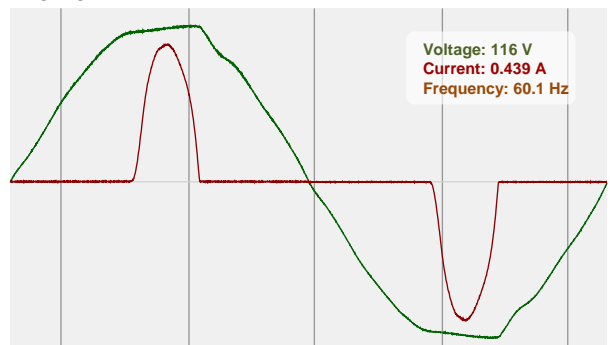
CIE 1931  
x: 0.309  
y: 0.316

Spectra

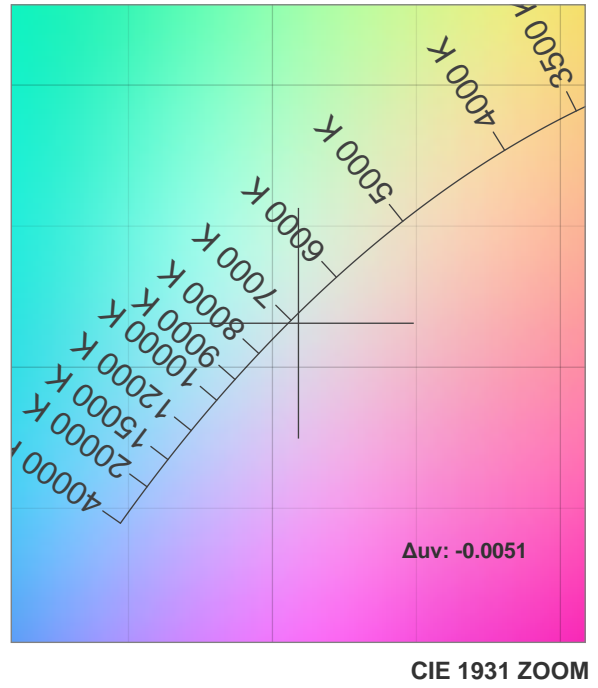
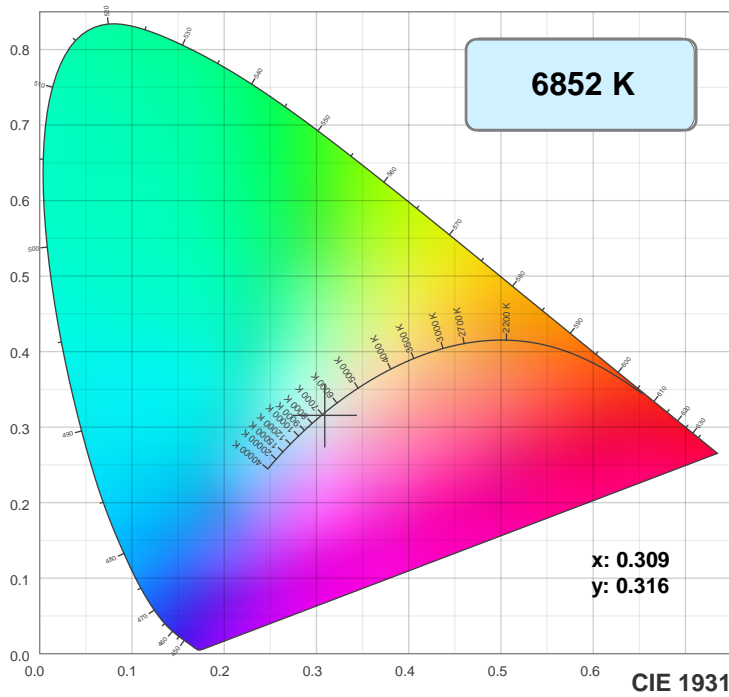
Dominant Wavelength: 360nm



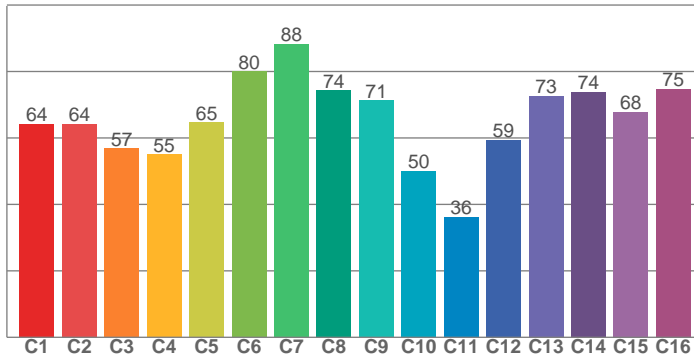
Power



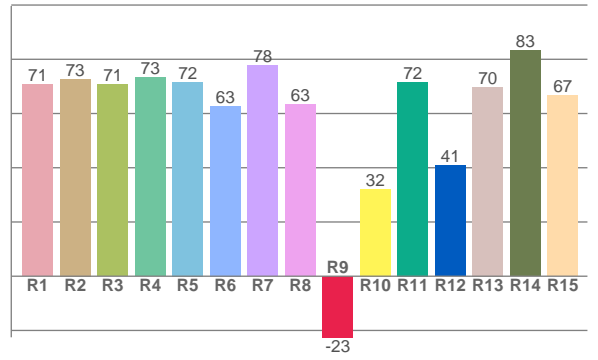
## Color Details



TM30: 65.3



CRI: 70.4 (R1-R8)



CRI R values, only R1-R8 are used to calculate final CRI value

R1	R2	R3	R4	R5	R6	R7	R8	R9	R10	R11	R12	R13	R14	R15
70.7	72.7	70.7	73.3	71.6	62.8	77.7	63.3	-22.5	32.1	71.6	40.8	69.8	83.1	66.5

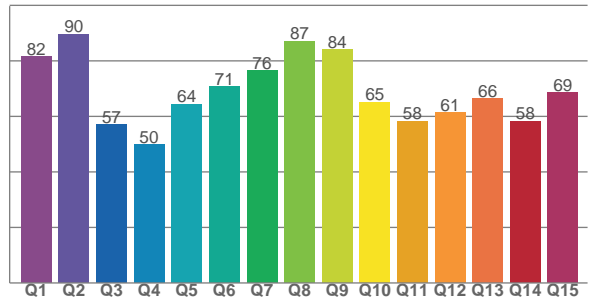
TM30 C values, 16 binned values out of total of 99 C values

C1	C2	C3	C4	C5	C6	C7	C8	C9	C10	C11	C12	C13	C14	C15	C16
64.2	64.3	56.8	55.1	64.7	80.0	88.2	74.4	71.3	50.1	36.2	59.4	72.6	73.9	67.8	74.7

CQS Q values

Q1	Q2	Q3	Q4	Q5	Q6	Q7	Q8	Q9	Q10	Q11	Q12	Q13	Q14	Q15
81.6	89.6	57.0	49.9	64.5	70.8	76.5	87.1	84.1	65.1	58.3	61.2	66.5	58.3	68.5

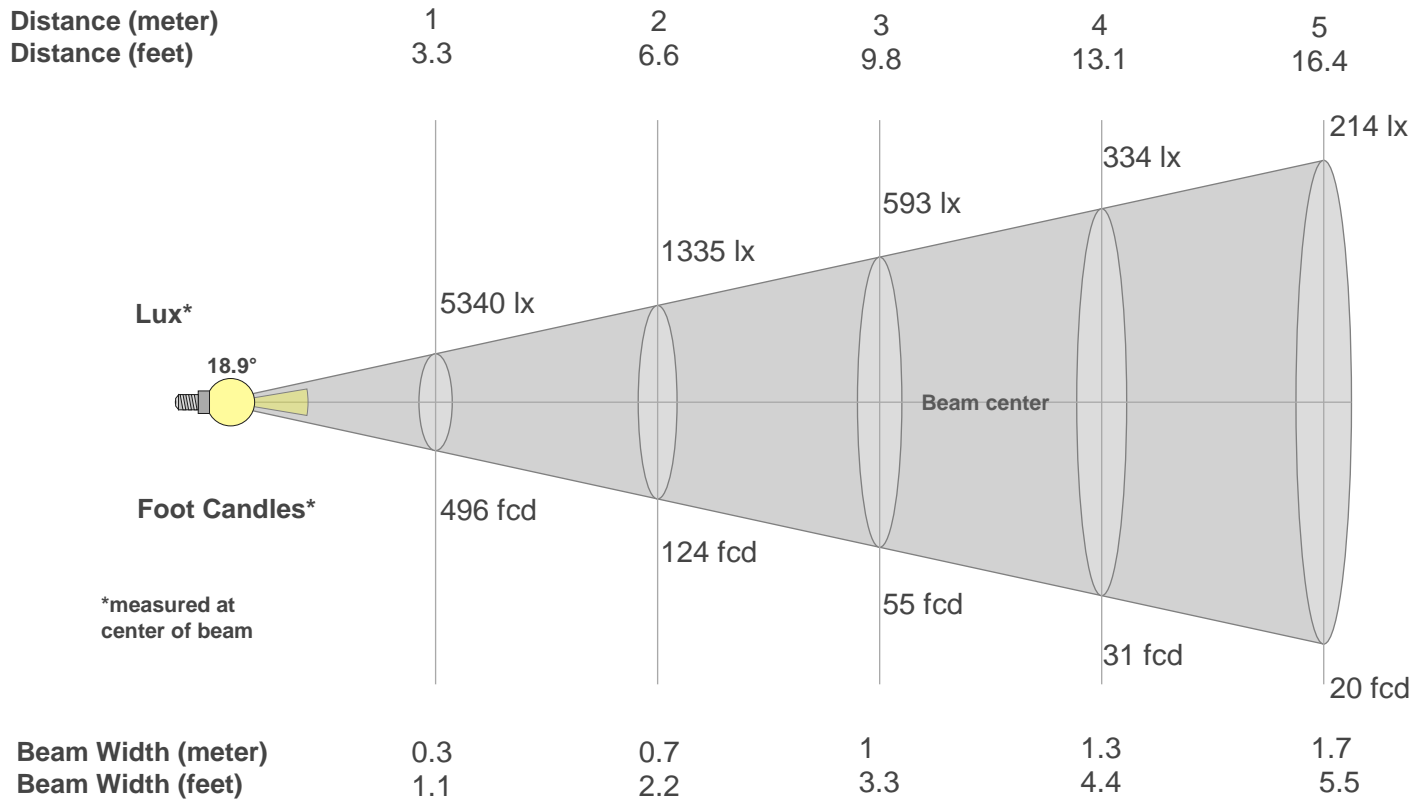
CQS: 67.1



## Color Parameters

Color Temperature	Color Rendering Index	Red Component	Color Fidelity	Color Gamut	Color Quality Scale	Color Coordinate CIE 1931	Color Coordinate CIE 1931	Color Coordinate	Color Coordinate	Color Deviation from Black Body
CCT	CRI	CRI R9	TM30 Rf	TM30 Rg	CQS	x	y	u	v	$\Delta uv$
6852 K	70.4	-22.5	65.3	95.4	67.1	0.309	0.316	0.200	0.307	-0.0051

## Beam Details



### Beam Intensities from 1-20m

m	1	2	3	4	5	6	7	8	9	10	11	12	13	14	15	16	17	18	19	20
ft	3.3	6.6	9.8	13.1	16.4	19.7	23	26.2	29.5	32.8	36.1	39.4	42.7	45.9	49.2	52.5	55.8	59.1	62.3	65.6
lx	5340	1335	593	334	214	148	109	83	66	53	44	37	32	27	24	21	18	16	15	13
fcd	496.1	124	55.1	31	19.8	13.8	10.1	7.8	6.1	5	4.1	3.4	2.9	2.5	2.2	1.9	1.7	1.5	1.4	1.2

### Intensities in 0° C-plane

0°	2°	4°	6°	8°	10°	12°	14°	16°	18°	20°	22°	24°	26°	28°	30°	32°	34°	36°	38°
5340	5168	4691	3998	3220	2487	1873	1408	1064	812	623	483	377	299	238	192	156	131	110	94
100%	97%	88%	75%	60%	47%	35%	26%	20%	15%	12%	9%	7%	6%	4%	4%	3%	2%	2%	2%

### Intensities in 90° C-plane

0°	2°	4°	6°	8°	10°	12°	14°	16°	18°	20°	22°	24°	26°	28°	30°	32°	34°	36°	38°
5340	5168	4691	3998	3220	2487	1873	1408	1064	812	623	483	377	299	238	192	156	131	110	94
100%	97%	88%	75%	60%	47%	35%	26%	20%	15%	12%	9%	7%	6%	4%	4%	3%	2%	2%	2%

### Intensities in 180° C-plane

0°	2°	4°	6°	8°	10°	12°	14°	16°	18°	20°	22°	24°	26°	28°	30°	32°	34°	36°	38°
5340	5166	4679	3983	3215	2488	1885	1421	1079	823	634	493	387	307	246	199	162	136	114	97
100%	97%	88%	75%	60%	47%	35%	27%	20%	15%	12%	9%	7%	6%	5%	4%	3%	3%	2%	2%

### Intensities in 270° C-plane

0°	2°	4°	6°	8°	10°	12°	14°	16°	18°	20°	22°	24°	26°	28°	30°	32°	34°	36°	38°
5340	5166	4679	3983	3215	2488	1885	1421	1079	823	634	493	387	307	246	199	162	136	114	97
100%	97%	88%	75%	60%	47%	35%	27%	20%	15%	12%	9%	7%	6%	5%	4%	3%	3%	2%	2%

Beam Angle 50%	Field Angle 10%	Cutoff Angle 2,5%	Intensity Ratio in 120° Cone	Intensity Ratio in 90° Cone
18.9°	42.5°	68°	98.8%	94.6%